

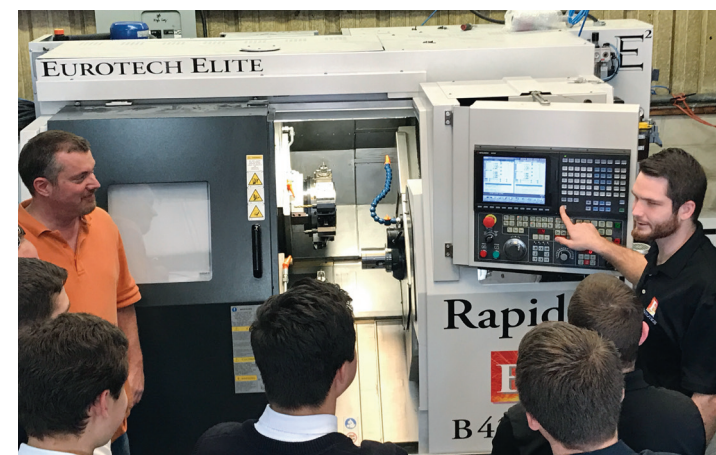
Eurotech ULTIMA B620 SLY - 34HP
Eurotech ULTIMA B620 SLY - 54HP

Standard Equipment includes:

- Eurotech-Fanuc EASY Plus Control, 15" LCD color touch screen and full keyboard
- 15 stations turret with driven tools, up to 120 tool capacity
- "C" axis with brake on both main and sub-spindle
- True Y-axis on solid box ways
- Programmable parts gantry system with dual conveyors
- Chip conveyor with 3.5 bar wash-down coolant pump + 7 bar coolant pump for the turret
- Bar feeder interface
- Automatic tool pre-setter
- SBS tool monitoring system combined with tool life and wear management
- Polygon turning on main spindle
- Damage protection software (airbag)
- Eurotech gap elimination software
- Coolant + air thru sub-spindle
- Pneumatic parts ejector on sub-spindle (100 mm stroke)
- Free tooling package including static/live
- Eurotech custom macros
- Rotary glass scales on main and sub-spindle

Options:

- Royal QG collet system on main & sub... price on request (in lieu of standard double cone collet system)
- Long shaft work system price on request
- High pressure coolant system price on request



Eurotech Free Lifetime Programming Classes

ULTIMA B620 SLY 34/54 HP

Specifications

Bar capacity..... 2.00"/ 2.75"
 Max mach. dia.....14.70"

Main spindle

Max speed.. 5000/4500 RPM
 Spindle nose..... ASA 6"
 Max chuck dia..... 8"
 Motor power (hp)..... 34/54

Sub Spindle

Max Speed.....5000 RPM
 Spindle nose..... ASA 5"
 Chuck dia..... 6"/ 8"
 Motor power..... 34 hp

Turret

Max # of tools with EGS.. 120
 No of stations..... 15

Live Tooling

Max # of live tools with EGS.. 60
 Max speed std..... 6,000 RPM
 Max speed opt...60,000 RPM
 HP (30 minute) 18

Axes

X-axis stroke..... 8.07"
 Z-axis stroke..... 24.4"
 Y-axis stroke..... +1.77 /-1.77"
 B-axis stroke..... 24.4"
 C-axis minimum program value..... 001"

Dimensions & Weight

Dim.....172"w x 75"d x 79"h (with chip conveyor)
 Weight..... 14,300 lbs

"The Eurotech is so much faster than the competition that its speed difference alone completely pays for the machine."

- Tom Hassett, Owner of T & L Automatics

"I can't say enough about our (5) Eurotech machine's! These machines are great, not to mention dependable. Our relationship with the service department is bar none!"

- Les Richards, Custom Mold

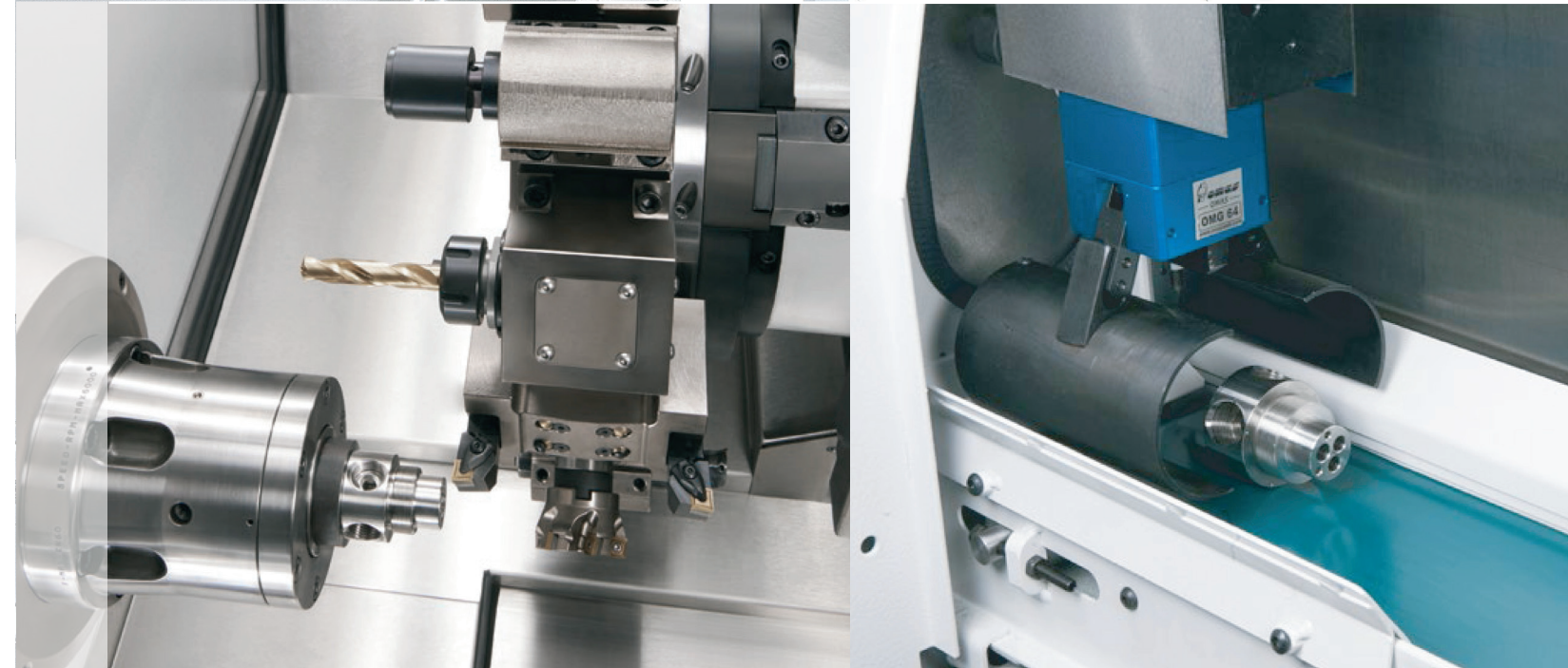


Eurotech Engineering Solutions and Free Technical Webinars

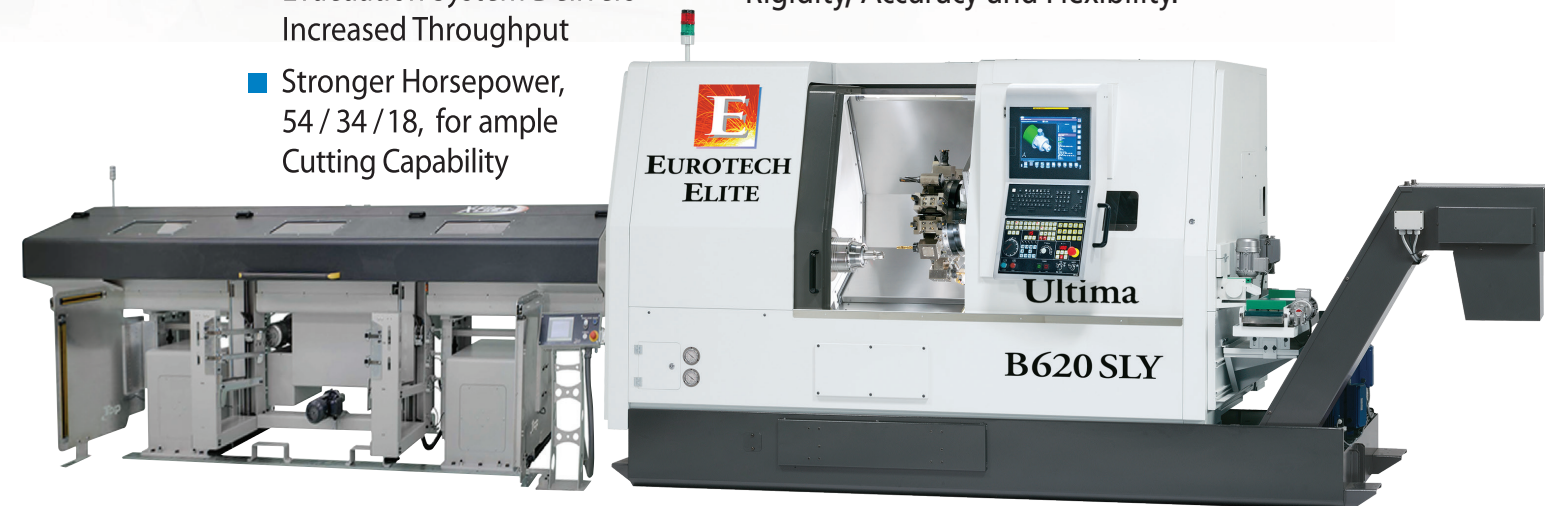


EUROTECH
 21125 Cortez Blvd.
 Brooksville, Florida 34601
 tele: 352.799.5223 fax: 352.358.7675
 email: info@eurotechelite.com
 web: www.eurotechelite.com

The New ULTIMA B620 SLY Series
34 Horsepower 51 mm or 54 Horsepower 71mm,
18 Horsepower Live Tools



- Eurotech's Gap Elimination Software Delivers Faster Cycle Times
- Eurotech Programmable Parts Evacuation System Delivers Increased Throughput
- Stronger Horsepower, 54 / 34 / 18, for ample Cutting Capability
- Up to 120 tools with EGS Tooling Saves Tool Change Time and Allows Redundant Tooling
- Boxway, True Y-Axis for Unmatched Rigidity, Accuracy and Flexibility.



The Ultimate Multi-Axis Bar Machine

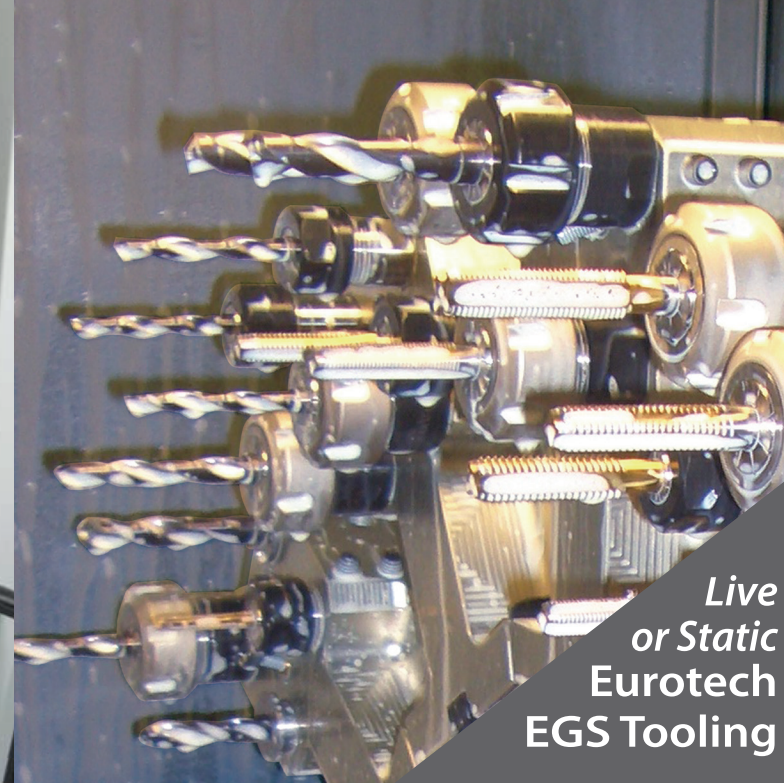


New Fanuc i-HMI



ERGONOMIC OPERATOR PANEL

- CNC FANUC i-HMI:
- 15" colour display touch screen
 - QWERTY keyboard
 - **Eurotech** operator panel
 - Data transmission: Ethernet gate, memory card, USB, RS232 port



Live or Static Eurotech EGS Tooling

NEW EUROTECH SERVO-TURRET

Fast and rigid Eurotech 15-station servo-turret. With Eurotech EGS tooling multiple live or static tools can be used on every station (up to 120 tools capacity). The rotary tools are driven by a liquid cooled, synchronous built-in motor with 18HP power and speed range of 6000 rpm. The rotary motion is transmitted by a built-in motor, lubricated and cooled by oil mist.

"With Eurotech many parts went from 7 ops to 1 op! We not only reduced our operations, but we inspect a complete part 1 time, instead of a partial part 7 times....Eurotech has gone above and beyond the call of duty. We are extremely pleased with the Eurotech product and team." - Ken Sutton, Fabco-Air

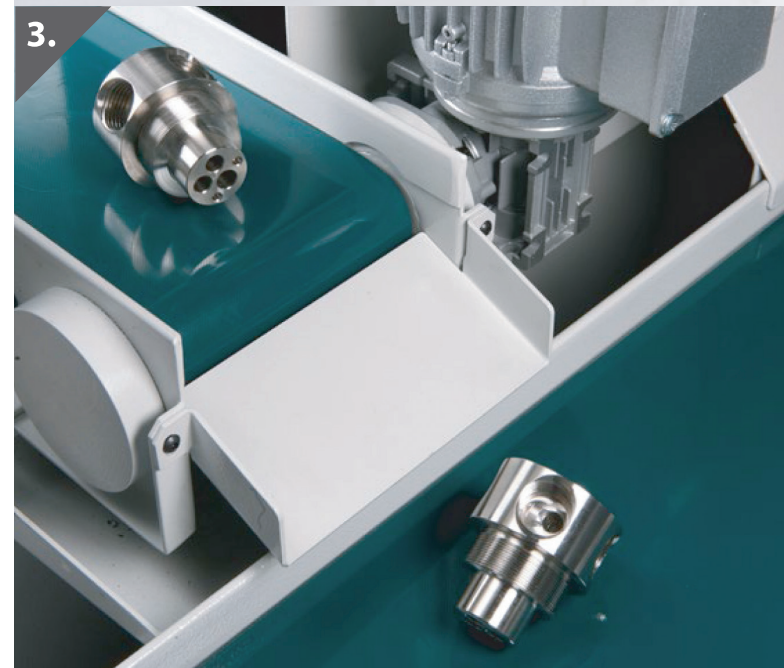
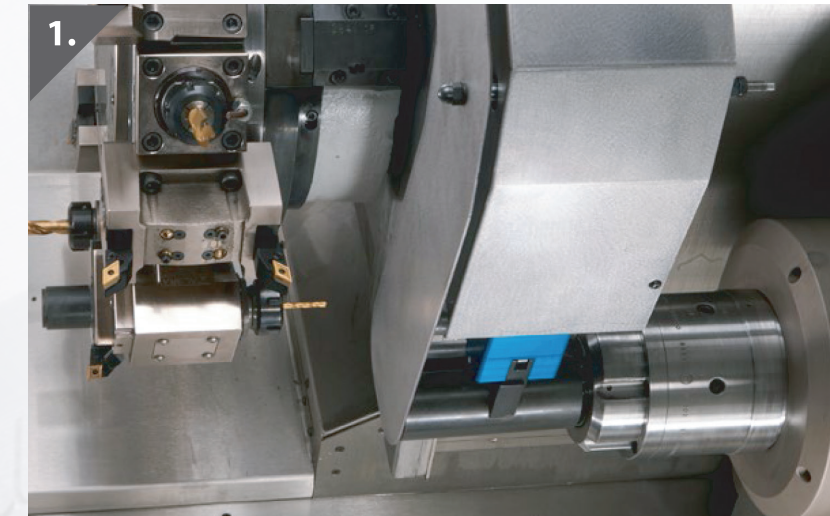
UNLOADING SEQUENCE OF THE GANTRY SYSTEM

1. Pick-up of finished part
2. Unloading on to the primary parts conveyor
3. Collection of finished part on the secondary parts conveyor

Increase Throughput and Your Productivity

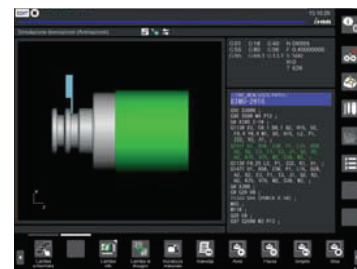
ULTIMA PARTS EVACUATION SYSTEM

The new parts evacuation system takes the finished part from the sub-spindle and unloads it directly onto a parts conveyor that passes the part to a secondary part conveyor to eliminate part damage and parts jamming...significantly increasing throughput.



INTUITIVE AND EXTREMELY USER-FRIENDLY

The i-HMI is the new human-machine interface, 15" color display with touch screen. The brand-new i-HMI system offers a high performance operating area where a simple touch allows the operator to gain access to all CNC functions: from work planning to **Eurotech** customized pages, real time display of machining conditions and records of specific technical documentation.



MANUAL GUIDE: QUICK AND EASY FOR PROGRAM RELIABILITY

The innovative MANUAL GUIDE software package provides operators with access to a very simple and user-friendly graphics interface, strong "editing" functions and offers a wide selection of machining cycles (turning, milling and drilling). This system allows the execution of even the most complex programs with ease of operation. The 3D simulation facilitates the checking of programs before machining operations (option).



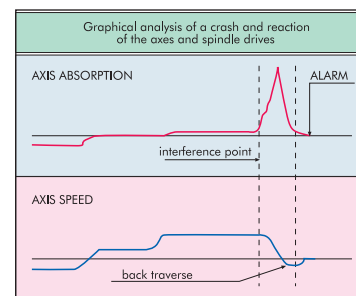
DATA DISPLAY

Data displayed while machining includes: actual position of axes, machining feed-rates, information of the spindle speed and current absorption, modal G-codes and machining cycle: all this on one screen page and in real time.



SBS: TOOL LOAD MONITORING (Option)

This system monitors the loading of the most heavily used tools such as cutting tools, roughening tools, drills or U-drills. It ensures safe automatic machining with limited operator presence (option).



DAMAGE PROTECTION (AIR BAG)

This special software detects the abnormal load created by a collision. When a collision occurs, spindle rotation is stopped and the axis movement is halted thus damping the interference and limiting damage to the tooling.